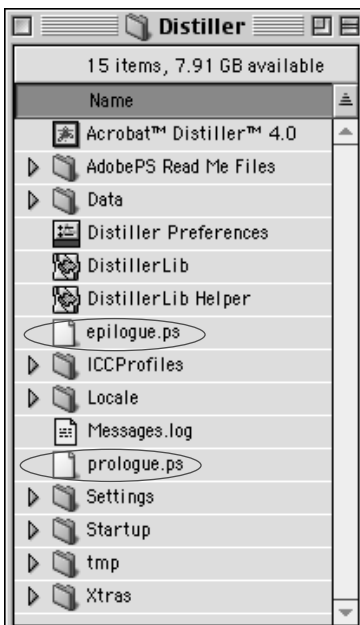


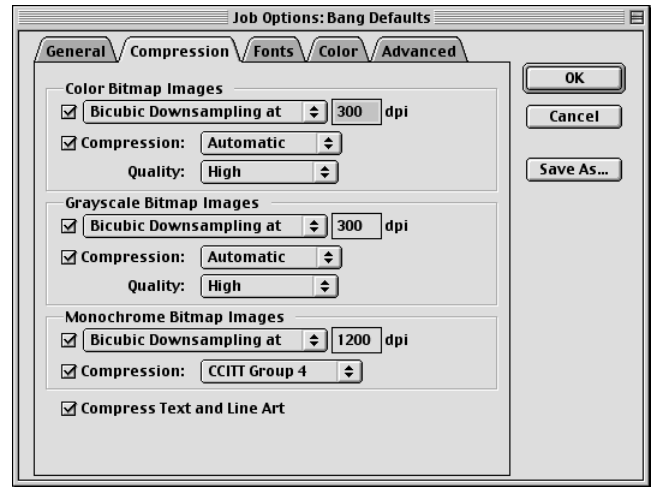
### DISTILLER JOB OPTIONS

Acrobat Distiller 4.0 is used to convert Postscript files into PDF files. Postscript files should be created from the application by following the Postscript Procedures supplied by Bang Printing. Distiller's Job Options must be set up correctly to create a good, high-res, predictable PDF file with all fonts embedded. The simplest way to ensure that your job options are correct is to install the "Bang

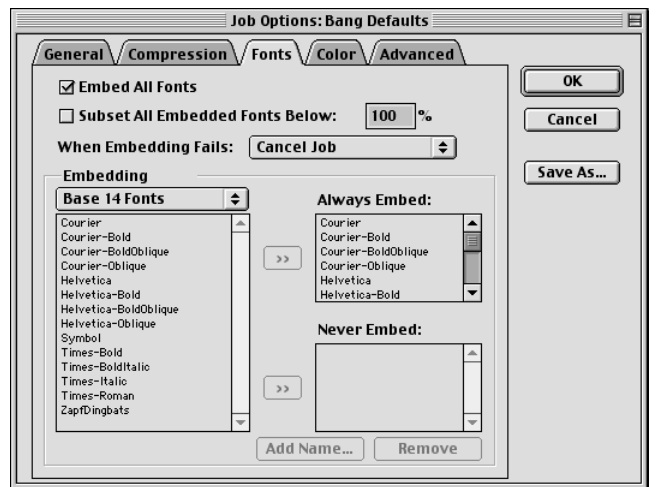


Defaults.joboptions" file in the Adobe Acrobat 4.0/Distiller/Settings folder. Also, while in the Distiller folder, make sure that the "epilogue.ps" and "prologue.ps" files are loose in the Distiller folder (see illustration). If they are not loose, they are probably in the "Data" folder. Just move them to the Distiller folder. If these two files are not loose, your Distiller will not handle spot colors correctly.

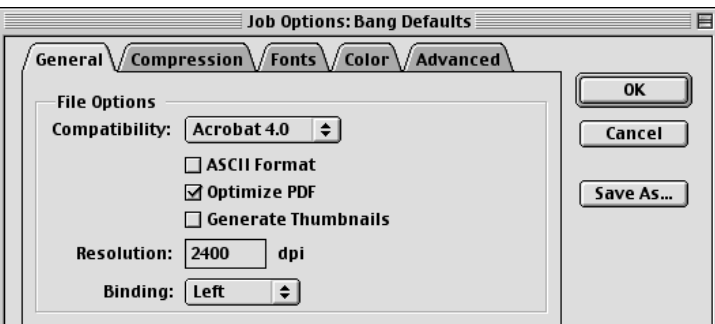
The Distiller Job Options should be set as shown in the following illustrations. When you install the Bang Defaults.joboptions file, all of these settings will be set automatically for you.



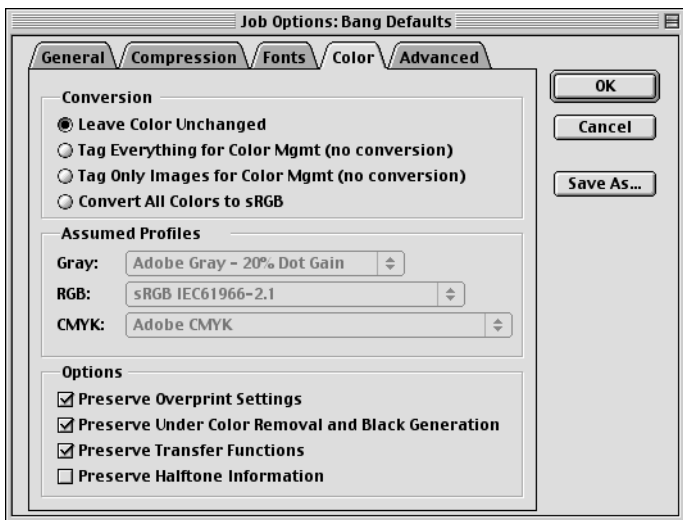
In the "Compression" tab, set the downsampling and compression settings as shown above. These settings ensure that all of the images in the PDF file will be high-resolution and also compressed in the best manner for each type of image.



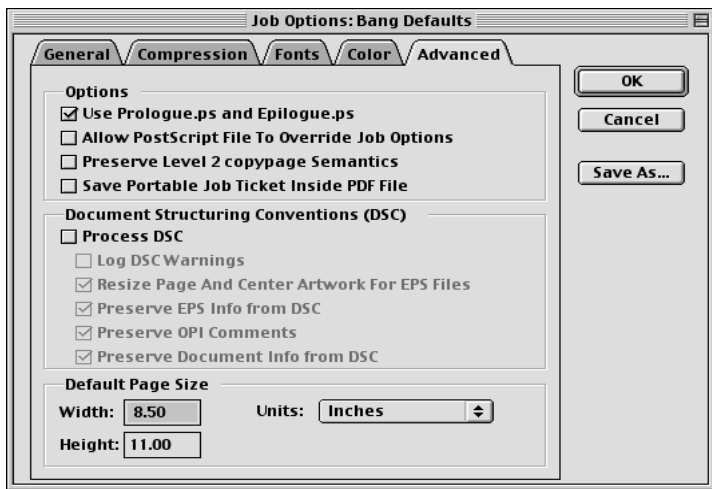
The settings in the "Fonts" tab should be as shown above. These settings ensure that all fonts will be embedded, and if for some reason they don't embed, the job will fail upon being distilled. This is important because you want to make sure that the fonts you used in your application are the ones that are actually used when your PDF files are output. If you leave the "Subset all fonts" option unchecked, every character of all fonts used will be embedded, which makes the PDF file a bit more editable. If this option is checked, fonts will be subsetted, which means that only the characters that were used are embedded. This can make it more difficult to edit the resulting PDF file.



In the "General" tab, it is important that the Compatibility is set on Acrobat 4.0 and the resolution be set at 2400 dpi so that the resulting PDF file is a good, high-resolution file.



The settings in the “Color” tab should look like the above illustration. It is important that the “Conversion” is set to Leave Color Unchanged so that Distiller does not add in any color management information, which could drastically change the colors in the file. All of the Assumed Profiles should be grayed-out as long as the Conversion section is set as shown. The Options at the bottom must be set as is to preserve trapping and image information. The Transfer Functions checkbox is especially important for printing duotones. We do not want the Halftone Information preserved because that is taken care of at the RIP when it is output.

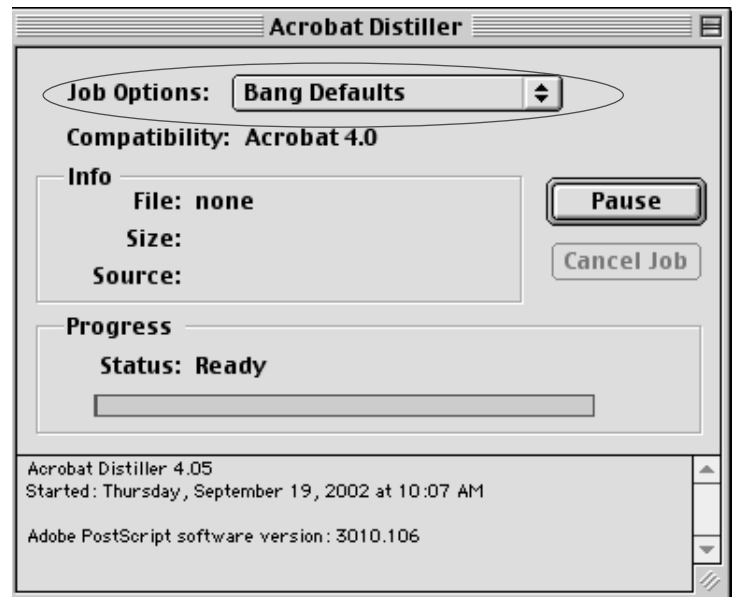


The “Advanced” tab should be set as shown above. The only thing that needs to be checked is the “Prologue and Epilogue” box, which helps when distilling files with spot colors. The Default Page Size information is only used if the Postscript file you are distilling fails to have bounding box information. Setting this as shown works for any page size up to 8.5 x 11.

Once all of the tabs are set up correctly, click the “save as” button and save these defaults.

## DISTILLING A POSTSCRIPT FILE

A Job Options file contains all of the settings described in the previous section. The Bang Defaults.joboptions will be available for selection in the Distiller window when placed in the Adobe Acrobat 4.0/Distiller/Settings folder on your hard drive.



To convert a PS file into a PDF file using Distiller, either simply drag the PS file onto the Distiller window, or go to the File menu and choose Open. It will show a log of the distilling process in the bottom part of the window and will show any errors that occur. This process usually only takes a few seconds. Keep in mind that the distilling process will error out if all of your fonts are not embedded in the PS file. If that happens, the PS file will have to be recreated with the fonts embedded.

When the distilling process is finished, open the resulting PDF file in Acrobat Exchange or Acrobat Reader. Look through it carefully to make sure that all pages look correct. A properly built PDF file will contain all necessary information for printing so errors or oversights will be evident.

In-depth review of PDF files can be accomplished by using Enfocus Pitstop. This plug-in allows PDF files to be run through a “preflight” to ensure integrity. In addition, information about overprints and knockouts, color builds, and fonts can be reviewed. Use of this product is valuable in providing the customer with control over the printed piece. Free trial versions are available at [enfocus.com](http://enfocus.com). Bang Printing can provide our preflight settings to get you up and running quickly.

